

# This is us CHINA RAIL SERVICE



18.10.2017

## Our rail services from and to China



# China Rail Service



- The trade routes in the tradition of the Silk Road are flourishing again
- Containerized goods are transported by rail in both directions, West- and Eastbound
- With regular departures, the trains complete the trip of up to 11,000 kilometers
- Average transit times are reliably maintained according to schedule:

<b>Westbound</b>	12 - 14 days
<b>Eastbound</b>	15 - 18 days

## The major challenges

- The containers are transferred to other trains on the route due to different track widths
- Industrial centers in central China are better connected than seaports
- About 20 railway stations cover an area with the extension of two continents
- Logwin supports you with individual advice on the INCO terms of delivery



## Logwin Rail LCL Service



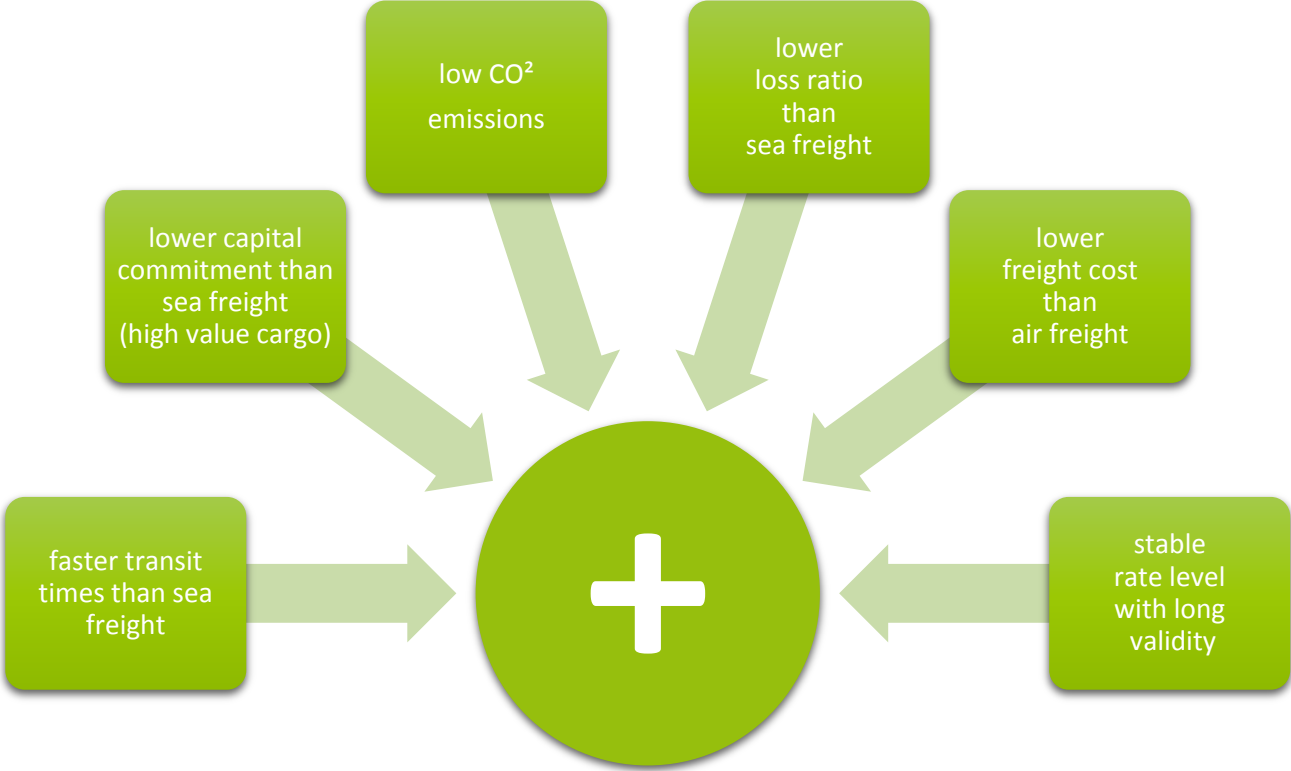
- Logwin operates its own LCL consolidated transports in the China Rail Service
- Weekly departures from Shanghai and Guangzhou to Warsaw
- Bi-weekly departures from Xiamen to Warsaw
- Weekly departures from Shanghai to Duisburg or Hamburg
- Eastbound weekly departures from Duisburg to Wuhan

# An attractive connection

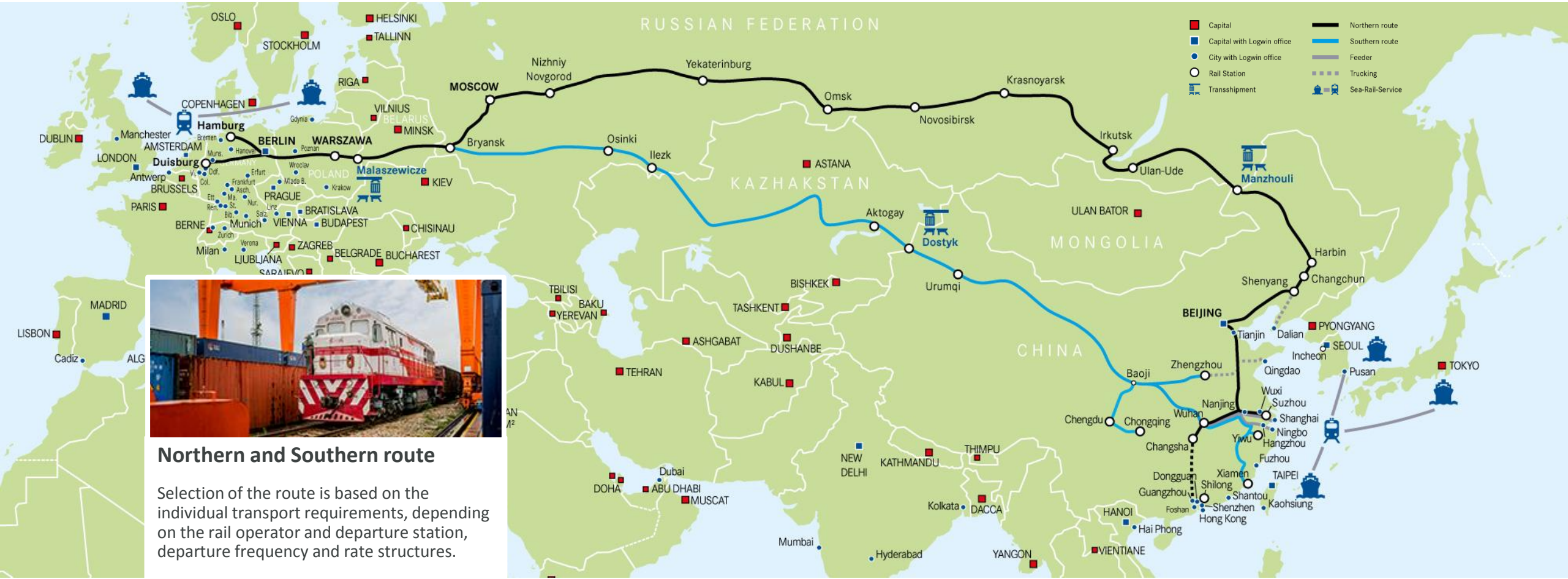
- The value of goods and the duration of the capital tie in relation to freight costs and transit time position rail transport in the middle segment between the two conventional modes of transport
- The China Rail Service is thus an equivalent transport alternative for many commodities mainly for the automotive and textile industries, mechanical engineering, consumer goods, electronics and high-tech products



# The main advantages



# Overview of routes



# China Rail Service

## Westbound

- Logwin-operated LCL service ex Shanghai, Xiamen, Guangzhou
- Steering of optimized shipment routings between Gateways in China and Europe
- Gateways Warsaw, Hamburg, Viersen
- Gateway Hub for Eastern Europe
- GPS Tracking (on request)
- On-carriage all over Europe

## Eastbound

- FCL exports offering 15 departures / week
- Logwin-operated LCL service from Duisburg to Wuhan
- GPS Tracking (on request)
- Pre- and On-carriage all over Europe and China




**This is us CHINA RAIL SERVICE**

**SCHEDULE 08/2017**

Origin	Transit time in days	Closing Hamburg / Duisburg	ETA	ETA	ETA	ETA
Urumqi	11-13	26.07.2017	09.08.2017	18.08.2017	11.08.2017	18.08.2017
Urumqi	11-13	02.08.2017	16.08.2017	25.08.2017	01.09.2017	01.09.2017
Urumqi	11-13	09.08.2017	23.08.2017	01.09.2017	08.09.2017	08.09.2017
Urumqi	11-13	16.08.2017	30.08.2017	08.09.2017	15.09.2017	15.09.2017
Urumqi	11-13	23.08.2017	06.09.2017	15.09.2017	22.09.2017	22.09.2017
Urumqi	11-13	30.08.2017	13.09.2017	22.09.2017	30.09.2017	30.09.2017



# European Network Destination



- CFS Warsaw, Hamburg, Viersen close to destination rail terminal
- Immediate pick-up of the containers at the terminal after availability of the ATB number
- Customs formalities in Logwin’s own hands
- Onforwarding by truck according to planned routing after the container unloading
- Shortly before pick-up of the goods at CFS, last minute instructions can be taken into consideration
- Palletizing, interim storage and other value-added services available at all Logwin CFS



# European Network Origin

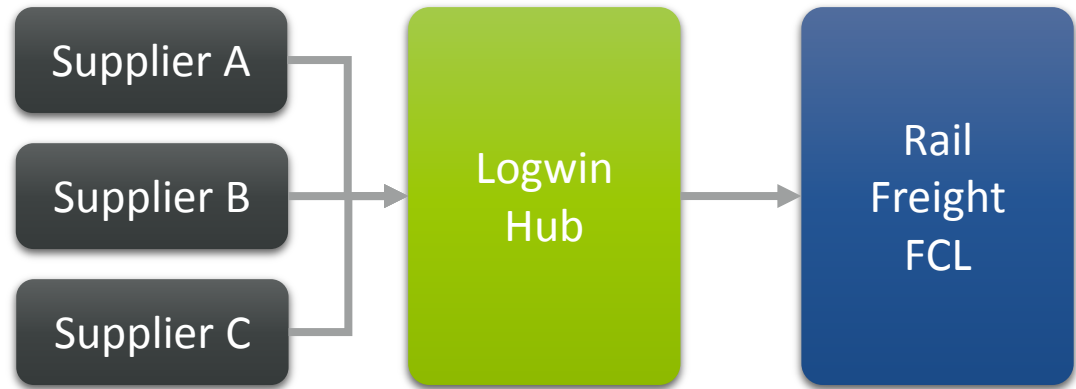


- CFS Dusseldorf close to departure rail station Duisburg
- Europe-wide pre-carriage to CFS
- Handling of packages up to 5 tons weight/piece
- Delivery orders can be accepted up to 24 hours before CFS Closing
- Opportunities for interim storage, palletizing and other VAS are available at the CFS



## Buyers consolidation by rail service

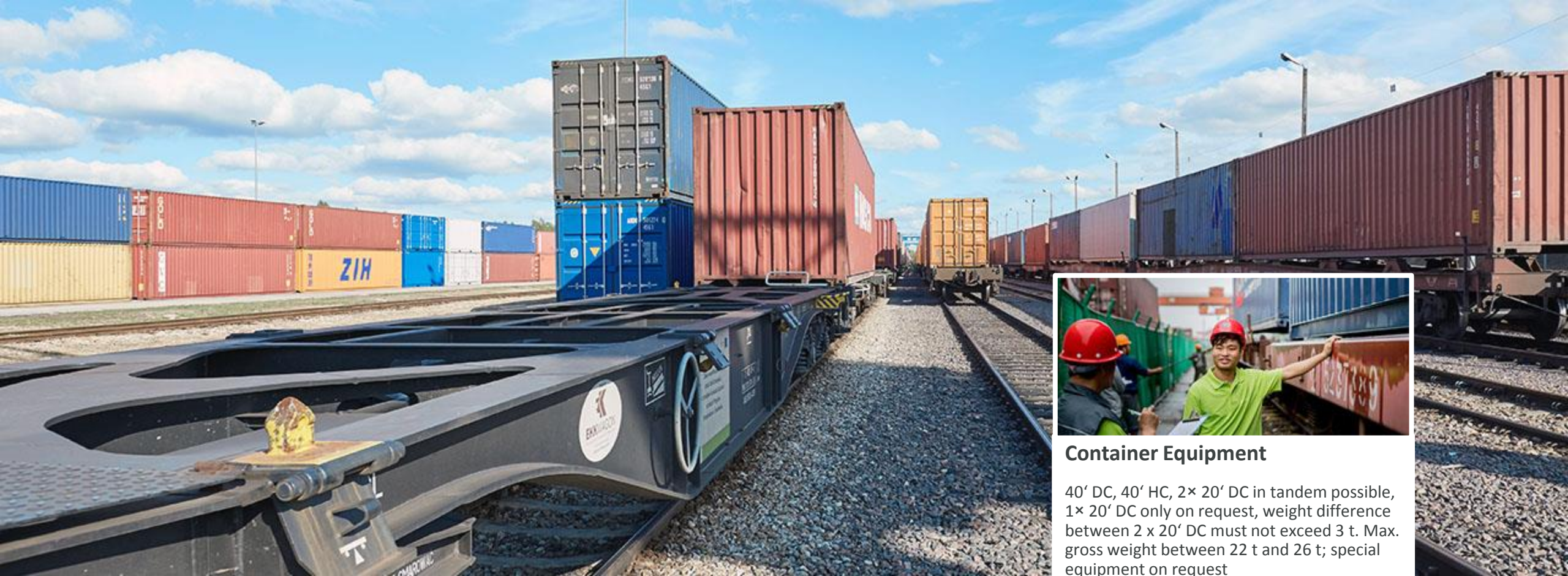
- Consolidation at Logwin ocean freight CFS:
  - Single delivery location for all suppliers
  - Switch from sea- to rail-freight available
- Tailor-made consolidation concepts including analysis of traffic flow, optimization of utilization (e.g. breakpoints, routings, reports, etc.)
- PO status follow-up with your supplier (supported by Logwin Lots)



### Consolidation for China Rail Service at Logwin CFS

- |              |             |
|--------------|-------------|
| • Dusseldorf | • Nanjing   |
| • Hamburg    | • Shanghai  |
| • Warsaw     | • Ningbo    |
| • Dalian     | • Xiamen    |
| • Tianjin    | • Shenzhen  |
| • Qingdao    | • Guangzhou |

# FAQ China Rail Service



### Container Equipment

40' DC, 40' HC, 2x 20' DC in tandem possible, 1x 20' DC only on request, weight difference between 2 x 20' DC must not exceed 3 t. Max. gross weight between 22 t and 26 t; special equipment on request

## FAQ China Rail Service



### Theft

- Special barrier seals can be applied to the container as additional protection
- generally the containers are stowed door against door

### Risk of damage

- Lower compared to the sea route, since much smaller forces impact on the goods (swell of the sea)

### Hazardous goods

- Depends on directives of the Chinese government



## FAQ China Rail Service



### Documents required for transport

- HS Code
- Commercial invoice
- Packing list
- Export customs documentation

### Optional documents

- Certificate of origin
- Fumigation certificate
- Veterinary certification
- Other goods-related documents such as import permit, etc.



# FAQ China Rail Service



### Transshipment en route

Due to the different track widths, the containers are trans-shipped at the border to China (Kazakhstan or Russia) and at the border between Poland and Belarus.

# Tracking via GPS

## Data

- Latitude
- Longitude
- Tracking interval (30 min)
- Door Signal
- Battery (%)
- Temperature (C)
- Humidity (%)

**General Information**

Serial Number: 2500001087

Shipment:

Container: CICU 990447-4

Estimated Start Date: 11.07.2017

Estimated End Date: 08.08.2017

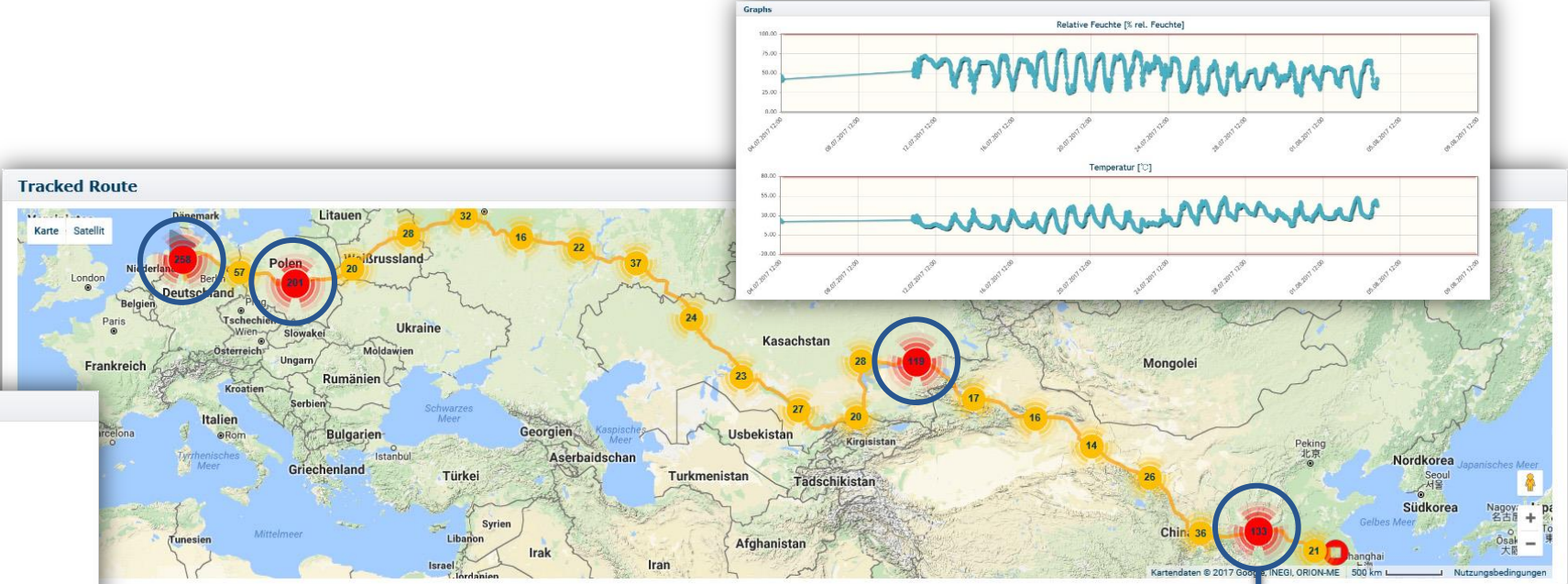
Last Position: 31.888 / 118.804

Last Position (GSM): Cheng Xin Da Dao, Nanjing Shi, China determined 5 minutes before

Last Message Date: 04.08.2017 07:35:50

Tracking Interval: 

Battery: 



Measured time intervals at trans-shipment points due to container movements at departure and arrival terminal as well as border crossings.



This is us



**CLOSE BY - INTERNATIONAL - PROFESSIONAL - DEDICATED**